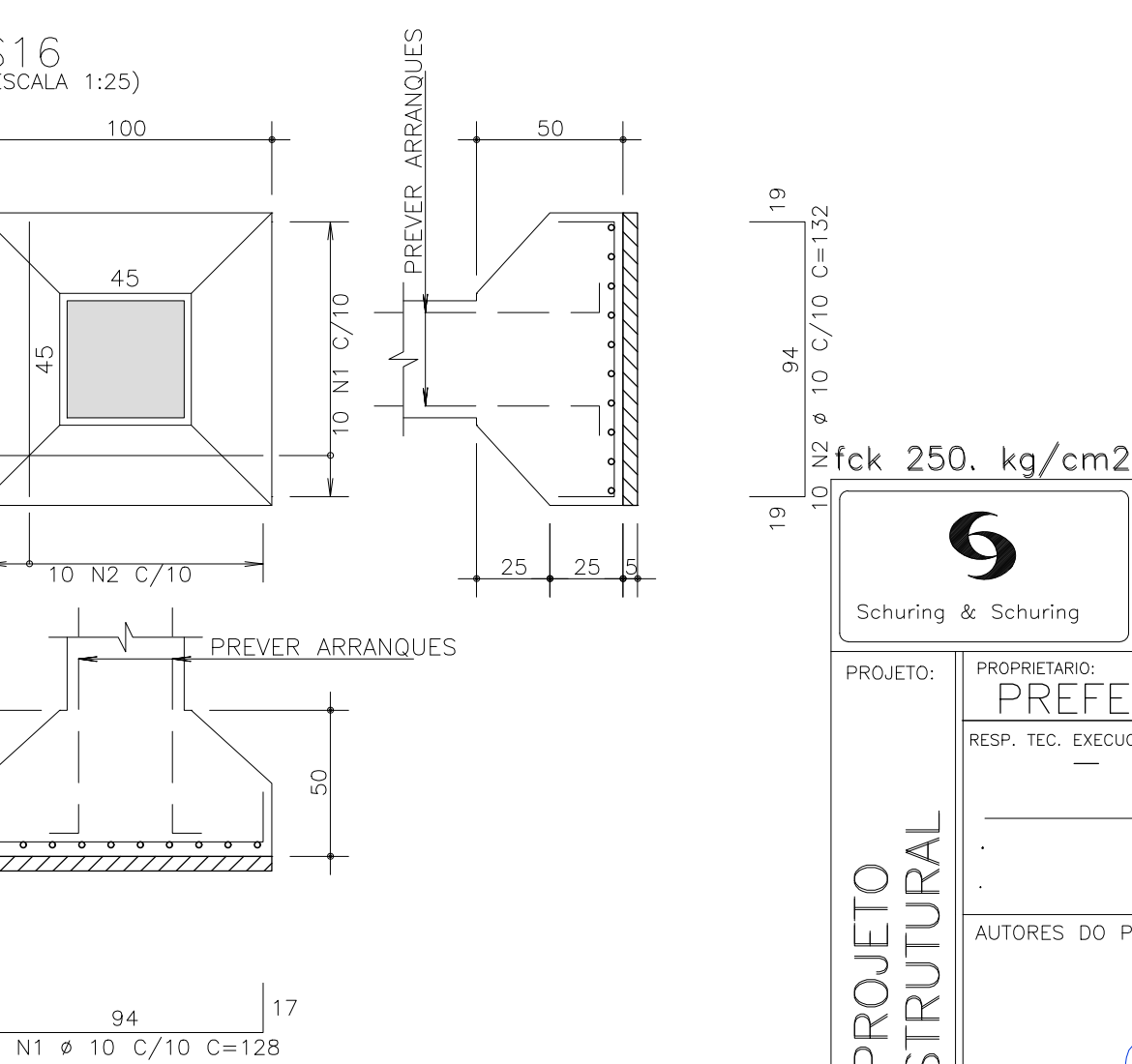
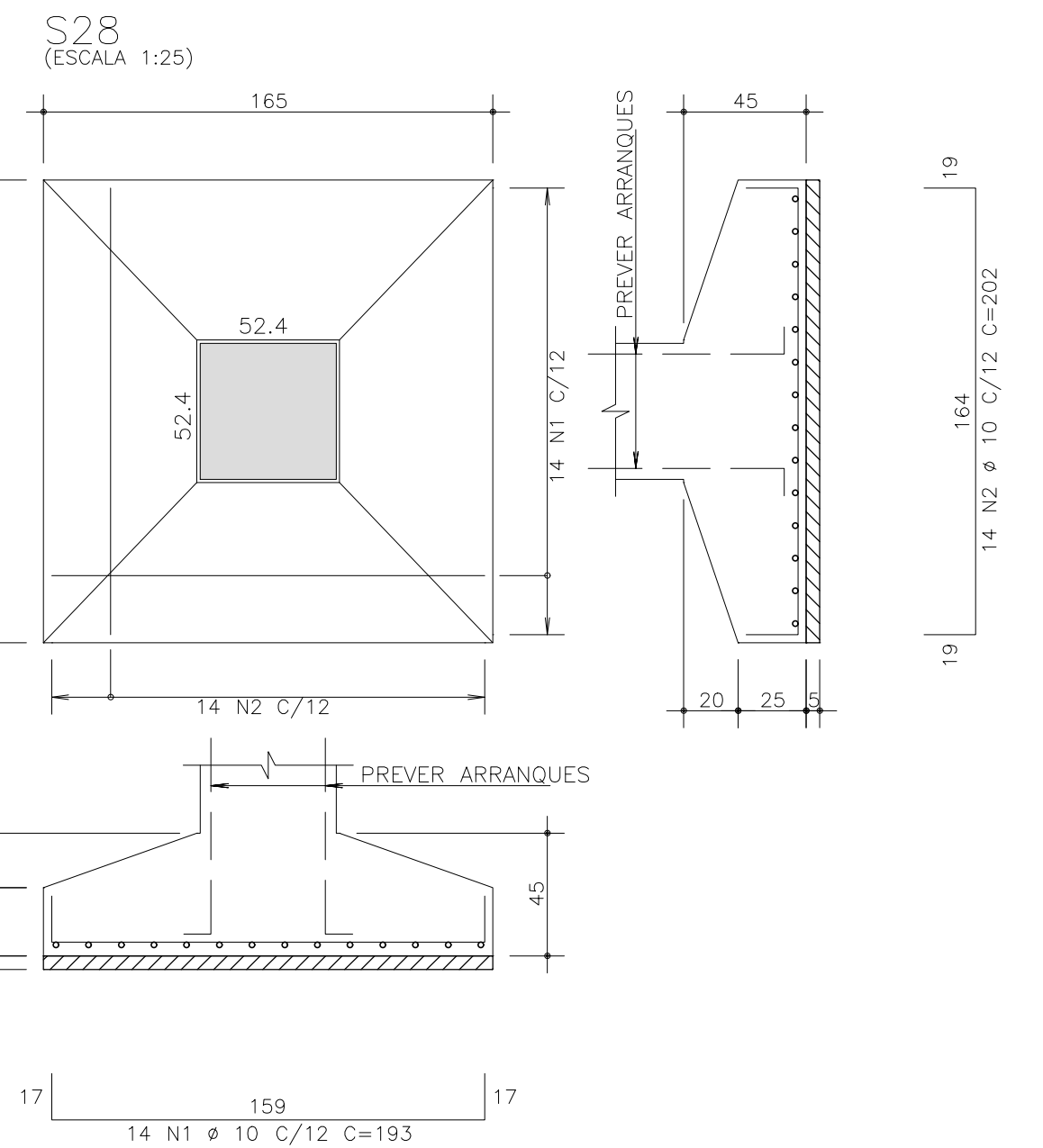
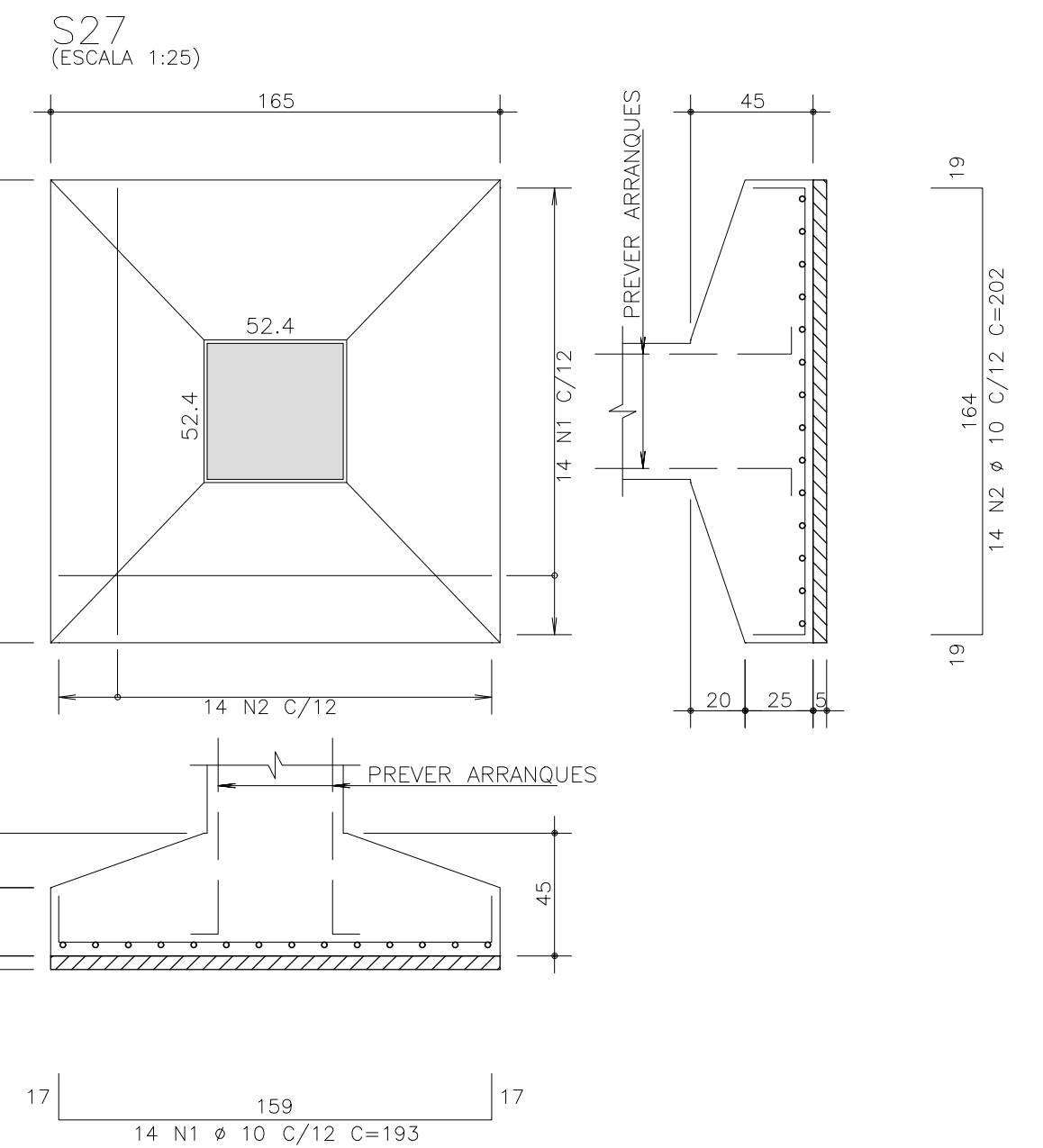
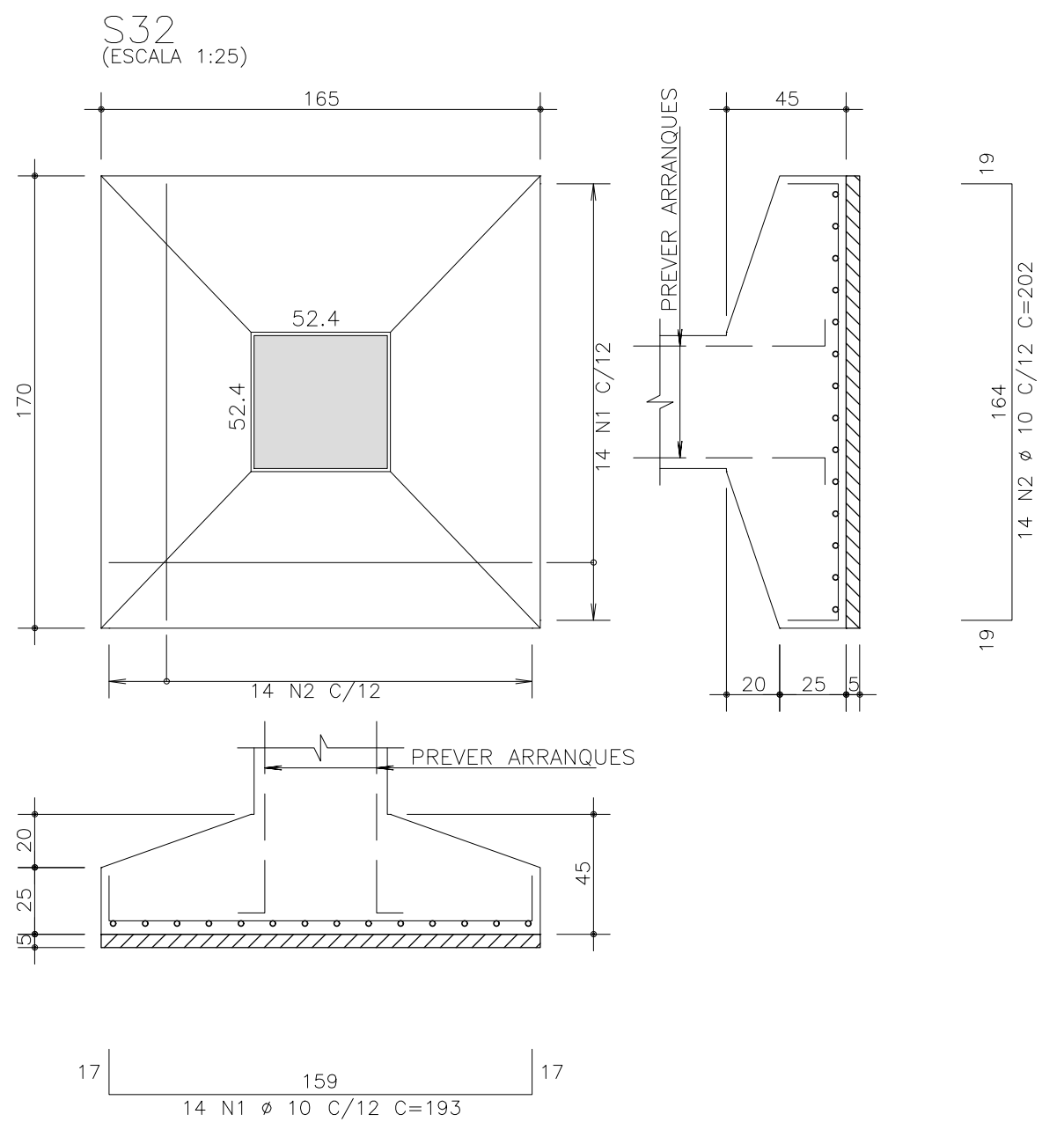
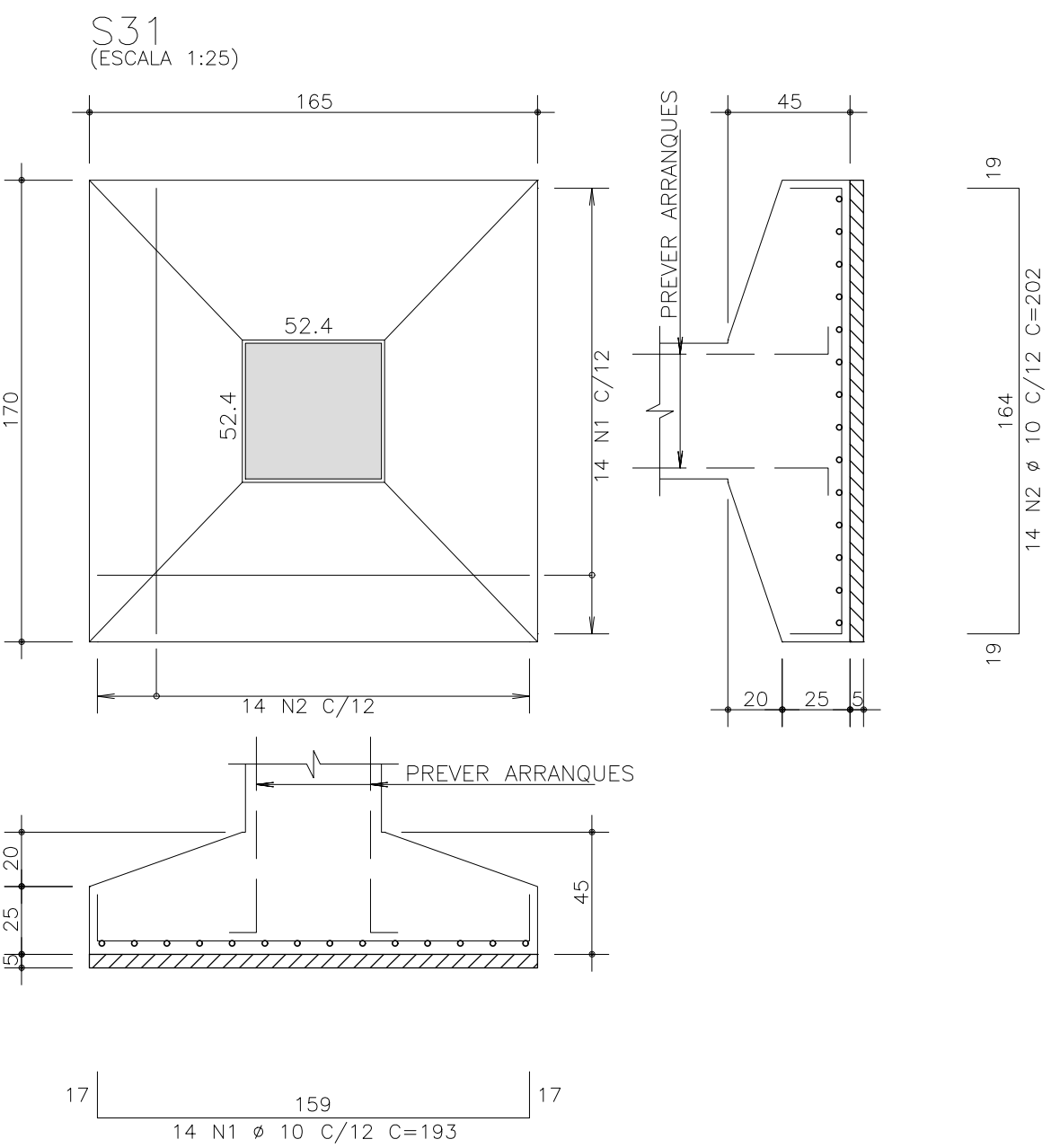
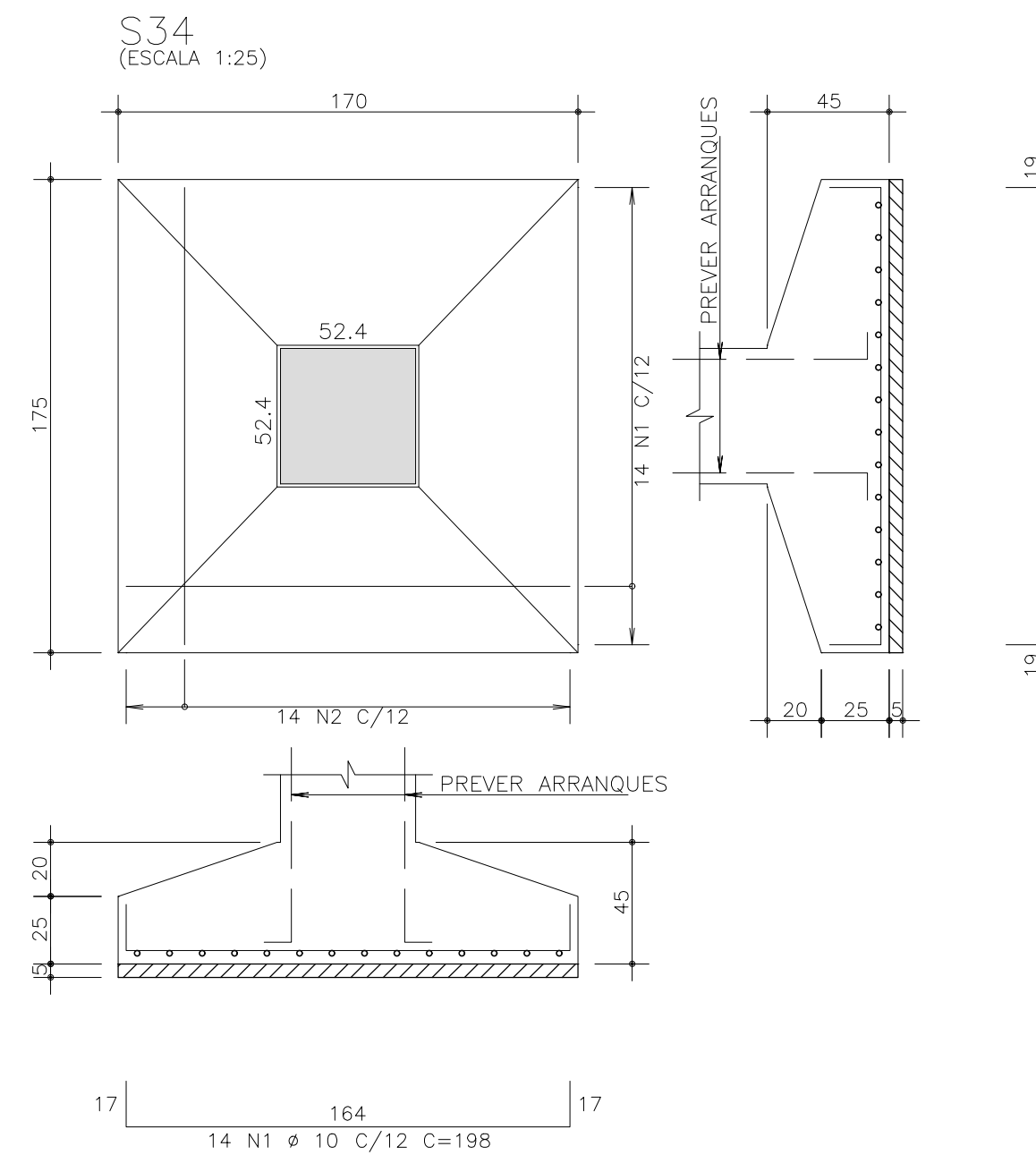
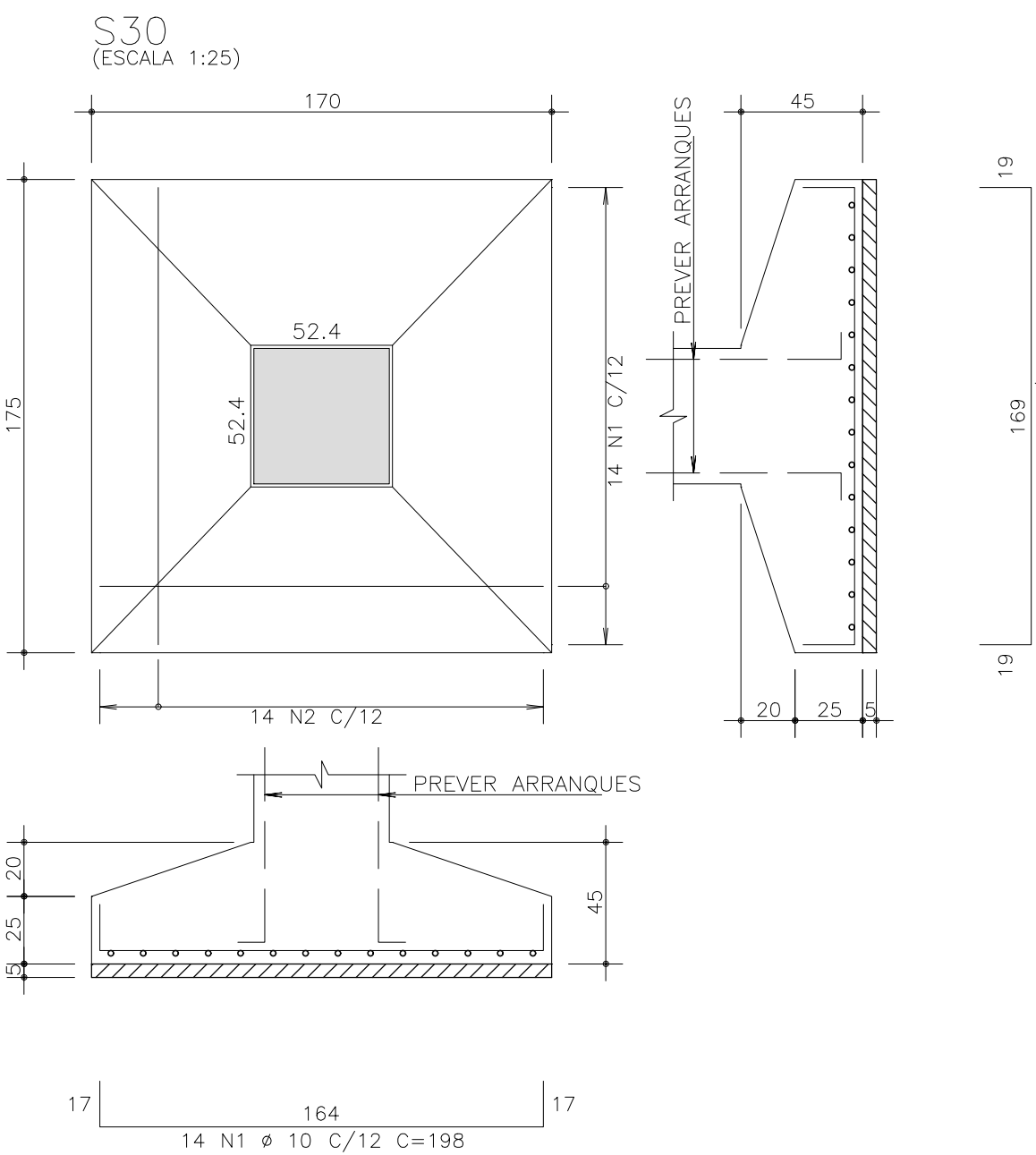
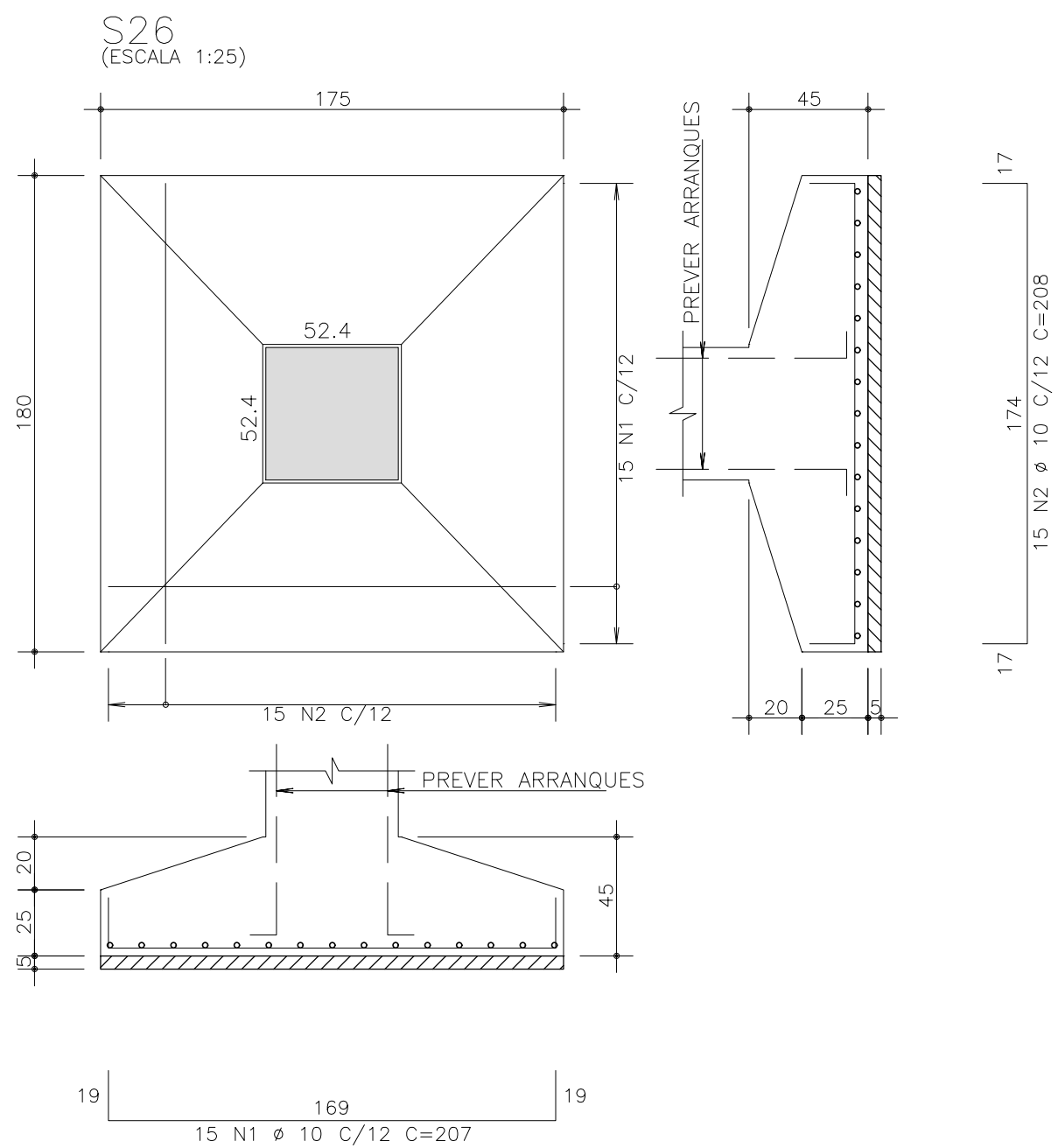


AÇO	POS	BIT (mm)	QUANT	COMPRIMENTO	
				UNIT (cm)	TOTAL (cm)
S14	50A	1	10	128	1280
	50A	2	10	132	1320
S16	50A	1	10	128	1280
	50A	2	10	132	1320
S25	50A	1	10	213	3408
	50A	2	10	222	3552
S26	50A	1	10	207	3105
	50A	2	10	208	3120
S27	50A	1	10	193	2702
	50A	2	10	202	2828
S28	50A	1	10	193	2702
	50A	2	10	202	2828
S29	50A	1	10	227	4086
	50A	2	10	228	4104
S30	50A	1	10	198	2772
	50A	2	10	207	2898
S31	50A	1	10	193	2702
	50A	2	10	202	2828
S32	50A	1	10	193	2702
	50A	2	10	202	2828
S33	50A	1	10	227	4086
	50A	2	10	228	4104
S34	50A	1	10	198	2772
	50A	2	10	207	2898

RESUMO AÇO CA 50-60			
AÇO	BIT (mm)	COMPR (m)	PESO (kg)
50A	10	682	421
Peso Total		50A =	421 kg



fck 250. kg/cm2 - C25

Schuring & Schuring Ltda. Escritório Técnico B.E.SCHURING - Projetos de Engenharia Av. XV de Novembro, 489 - Porto Zo. Andar - Cuiabá MT Fone:(065) 321 9959 - Fax:(065) 623 5066 - Email - schuring@terra.com.br	
PROJETO: PROPRIETÁRIO: RESP. TEC. EXECUÇÃO: PREFEITURA MUNICIPAL DE VÁRZEA GRANDE	OBRA: PARQUE BERNECK-PARQUE AQUATICO
AUTORES DO PROJETO:	END.: Av. Julio Campos, SN - Bairro Água Vermelha Várzea Grande MT
ASSUNTO: DET ARM SAPATAS	PECAS DETALHADAS: S14 / S16 / S25 / S26 / S27 / S28 / S29 S30 / S31 / S32 / S33 / S34
FCK: 250 ESCALA: 1:50	DIREITOS AUTORES RESERVADOS VERIFICAR MEDIDAS NA OBRA DATA: 18/05/2020 FOLHA No: 04